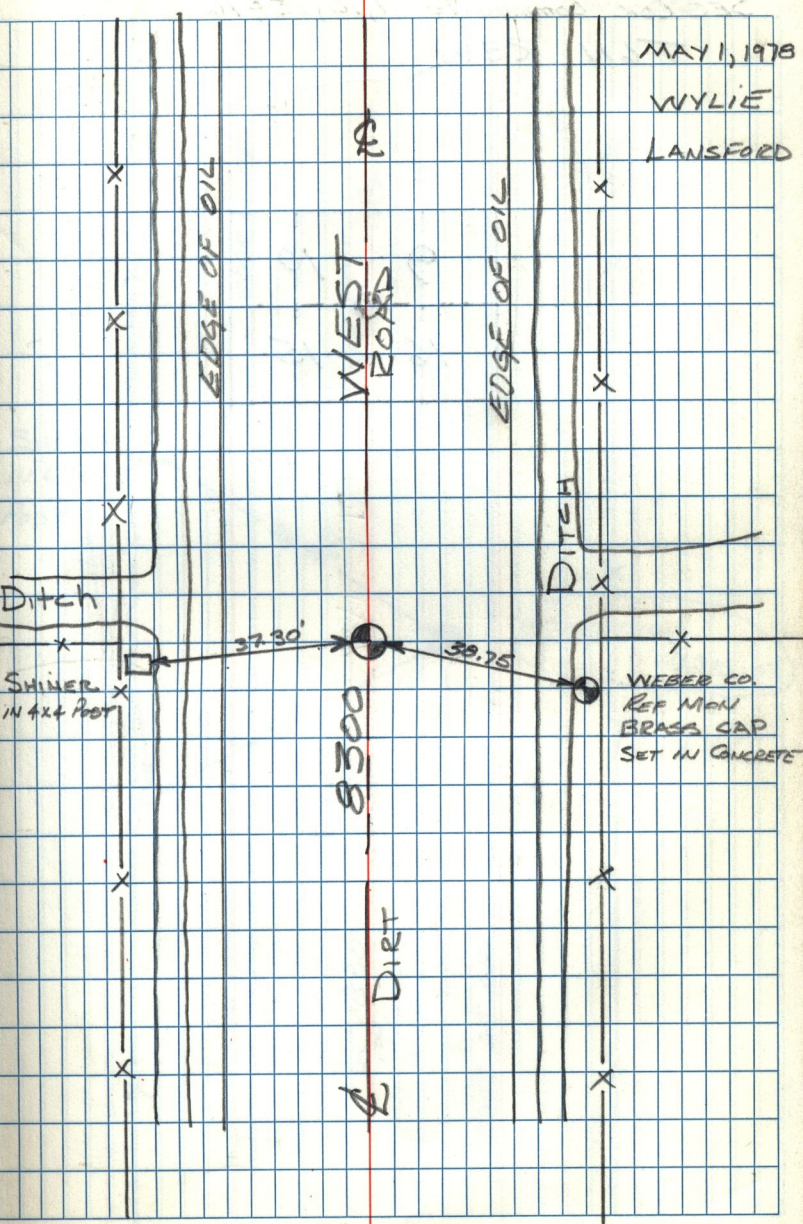


MAY 1, 1978

WYLIE

LANSFORD



Ditch

SHINER
IN 4x4 POOL

EDGE OF OIL

WEST
ROAD

EDGE OF OIL

DITCH

37.30'

8300

DIET

39.75'

WEBER CO.
REF MARK
BRASS CAP
SET IN CONCRETE